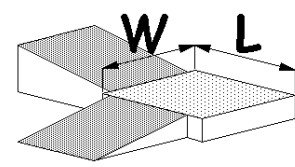
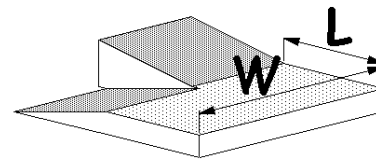


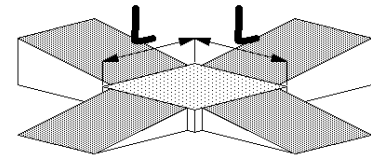
STRAIGHT RUN



90 DEGREE TURN



180 DEGREE TURN



INTERSECTING RAMPS

INTERMEDIATE LANDINGS at RAMPS

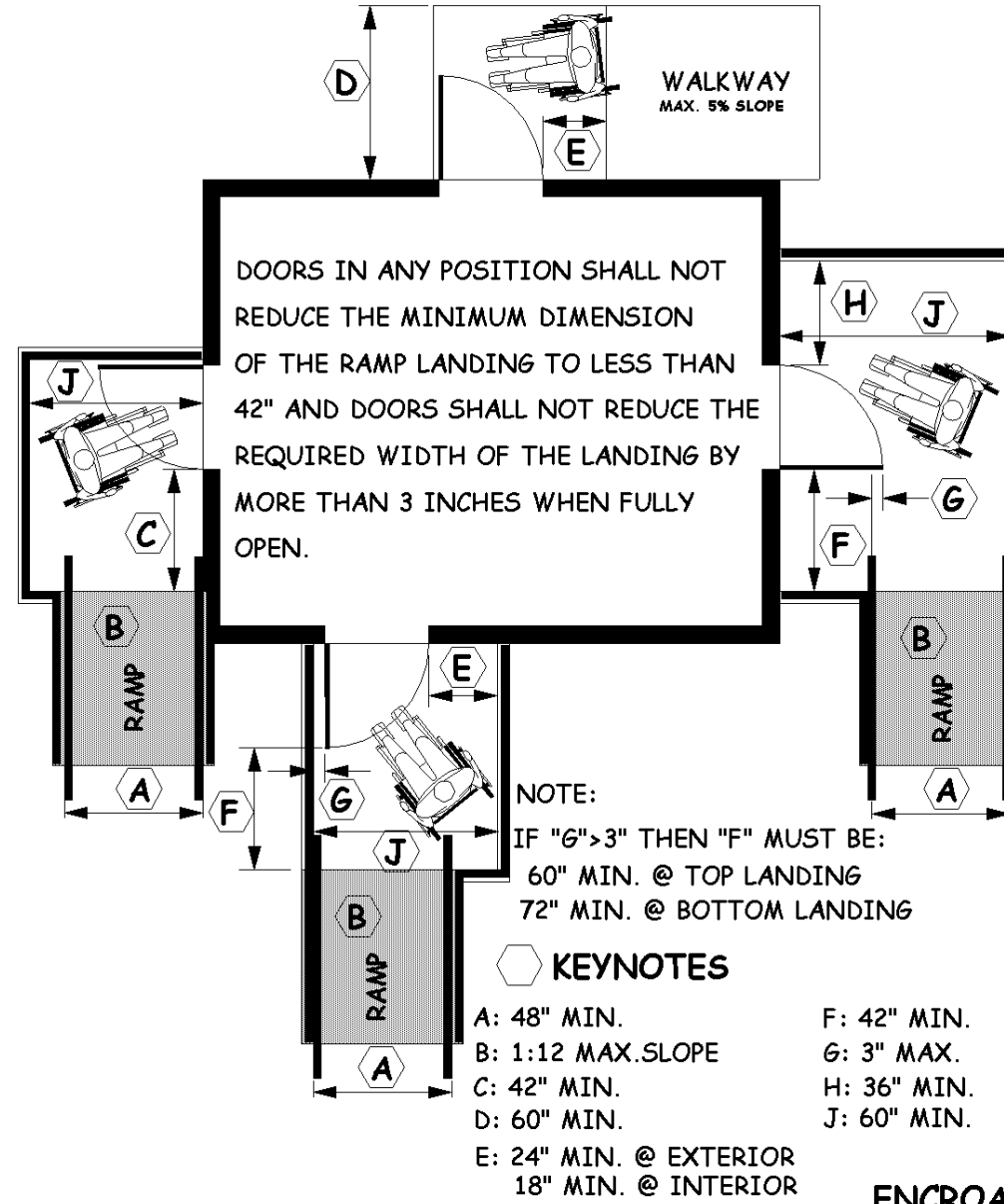
RAMP CONFIGURATION	LANDING LENGTH(L)	LANDING WIDTH(W)	NOTES
STRAIGHT RUN	5'-0" min.	4'-0" min.	1, 2, 3, 4
90 DEGREE TURN	6'-0" min.	5'-0" min.	1, 2, 3
180 DEGREE TURN	6'-0" min.	8'-0" min.	1, 2, 3
INTERSECTING	6'-0" min.	—	1, 2, 3

NOTES:

- HANDRAILS AND GUARDS HAVE BEEN OMITTED FOR CLARITY.
- LANDINGS AT EXTERIOR LOCATIONS MAY HAVE UP TO A MAXIMUM 2 PERCENT SLOPE AND CROSS-SLOPE.
- FOR ENCROACHMENT OF DOORS ONTO LANDINGS, SEE DETAIL "B".
- A CHANGE OF DIRECTION NOT EXCEEDING 30 DEGREES IS CONSIDERED A STRAIGHT RUN.

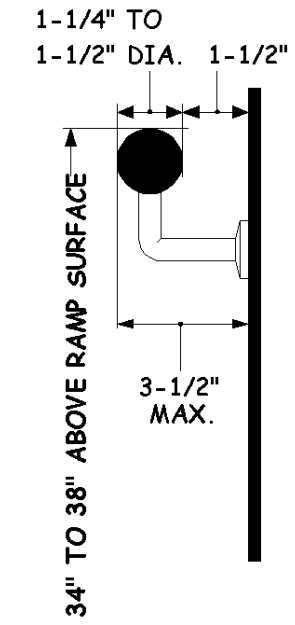
INTERMEDIATE LANDINGS at RAMPS

A

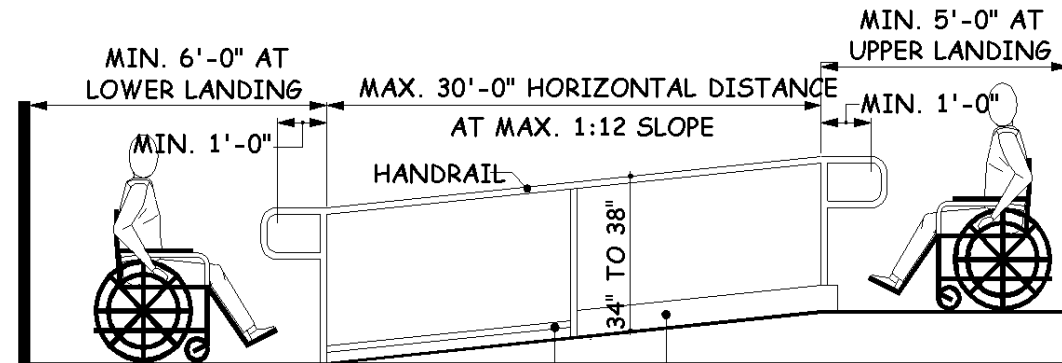


ENCROACHMENT OF DOORS ONTO LANDINGS

B



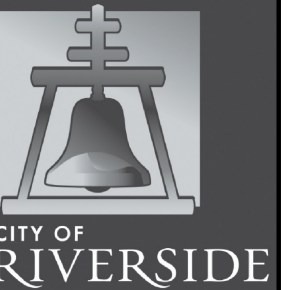
MINIMUM HANDRAIL REQUIREMENTS



GUIDE RAIL CENTERED AT 3" (+/- 1") ABOVE RAMP SURFACE-OR- MIN. 2" HIGH WARNING CURB IF DROP-OFF EXCEEDS 4", THEN A 6" HIGH WARNING CURB IS REQUIRED

HANDRAIL and GUARD REQUIREMENTS

C



City of Riverside
Building & Safety Division
DISABLED ACCESS STANDARDS

SCALE NONE

PGH 6 / 02
DRAWN DATE

REV.	DATE	APPR.
1	01-01-11	PGH
2	08-01-12	PGH
3		
4		
5		

ACCESSIBLE RAMPS & LANDINGS

RDA - 2.0

SHEET